

CRUSTACEA-CHECK

ELISA KIT

For the quantitative determination of low levels of
CRUSTACEAN species
in raw materials, uncooked/cooked foods, swabs etc.

INSTRUCTIONS FOR USE

READ CAREFULLY BEFORE PROCEEDING!

Cat. No. **R6027 (48-wells) / R6026 (96-wells)**

STORE REFRIGERATED (2-8°C – see Section 5.2.1)

QIS194 CRUSTACEA ELISA R6026 6027 V02

September 2011

Amendments: 1. New direct sandwich assay format

**INSTRUCTIONS FOR USE: CONTENTS**

Section	Page	TITLE
1.	3	INTRODUCTION TO THIS TEST KIT
2.	3	INTENDED USES OF THE KIT
3.	4	DIAGRAM OF THE ELISA METHOD
4.	4	SAMPLE PREPARATION & ELISA OVERVIEW
5.	5	SAFETY & PROCEDURAL NOTES
6.	6	KIT MATERIALS PROVIDED
7.	7	EQUIPMENT & MATERIALS YOU NEED (NOT INCLUDED)
8./9.	8	PREPARATION OF REAGENTS and SAMPLES
10.	9	EXAMPLE ASSAY LAYOUT
11.	10	ELISA PROCEDURE
12.	11	CALCULATION OF RESULTS
13.	11	EXAMPLE ASSAY DATA
14.	12	INTERPRETATION OF RESULTS
15.	13	PERFORMANCE INDICATIONS
16.	13	PROBLEM SOLVING
17.	15	RECYCLING



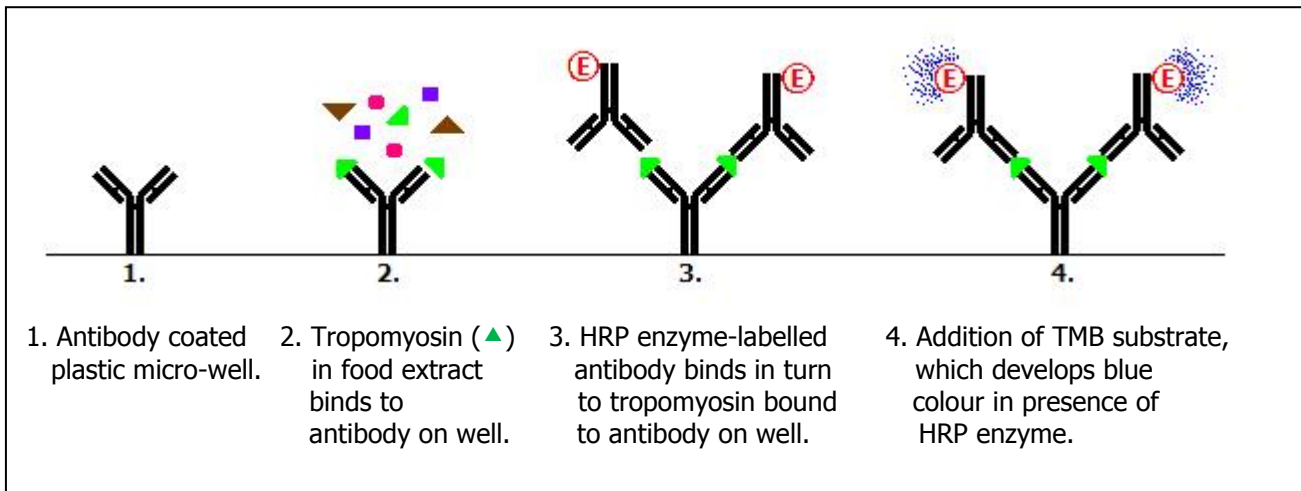
1. INTRODUCTION TO THIS TEST KIT

- 1.1. The prevalence of food allergy is increasing, age at onset is decreasing and the condition can have severe effects, including breathing difficulties, anaphylaxis and in rare instances, death. Legislation has been put in place to ensure that allergy sufferers are informed of the *intentional inclusion* of key food allergens. In the EC, Directives 2003/89 & 2005/26 originally applied and other allergens were added in 2006. In the USA, the “Food Allergen Labeling and Consumer Protection Act” (FALCPA) came into force early in 2006; both mandate the clear labelling of particular food allergens.
- 1.2. In the **EC** the intentional presence of the following foods must be listed in the ingredients: celery/celeriac; cereals (*wheat*, rye, barley, oats, spelt, kamut); **crustacea**, *eggs*; *fish*; lupin, molluscs, mustard; sesame; *soya* & *tree nuts* (almond, hazelnut, walnut, cashew, pecan, Brazil, pistachio, macadamia). In the **USA** the list is similar but includes only those foods in *italics* above.
- 1.3. Food producers are advised by food protection agencies (UK’s FSA and the US FDA) to restrict the use of so-called “may contain” labelling to products whose manufacturing processes have been assessed using HACCP and for which the presence of undeclared allergens is both significant and unavoidable.
- 1.4. Crustacea are often found in e.g. snacks, ready meals etc. Allergies to crustacean proteins can result in serious symptoms ranging from minor skin irritation and facial swelling to much more severe digestive and respiratory problems or even fatal anaphylaxis; these effects make detection of crustacean allergens in food important.

2. INTENDED USES OF THE KIT

- 2.1. The assay utilises polyclonal antibodies to detect a crustacean muscle protein (tropomyosin; *Pen a1*) as a marker of the presence of crustacean proteins present in extracts of foodstuffs using an direct “sandwich” assay ELISA technique. Results are expressed as parts per billion (ppb; $\mu\text{g}/\text{kg}$) crustacean tropomyosin but can also be converted to total crustacean equivalents – see Section 14, page 11.
- 2.2. It is designed to detect tropomyosin at very low levels in fresh, processed and heated food products. The assay can be used manually or in automated ELISA analysers.
- 2.3. The assay’s quantitation range is 20-400ppb tropomyosin, equivalent to ~1.2-24 mg/kg (PPM) of uncooked prawn/shrimp tissue on a dry weight basis, if the stated extraction ratio is used. The range can be extended upwards by diluting extracts in Extraction Buffer if required.
- 2.4. The Limit Of Detection (LOD) of the assay is equivalent to ~1.0 ppb tropomyosin, equivalent to <0.1mg/kg (ppm) shrimp/prawn tissue on a dry weight basis.
- 2.5. The assay can be used to test e.g. food raw materials, environmental swab samples, part-processed/finished food products for crustacea contamination.

3. DIAGRAMS OF THE ELISA METHOD



4. SAMPLE PREPARATION & ELISA OVERVIEW

4.1. Laboratory Sample Preparation

- ↓ **Prepare** Sample by grinding/chopping/blending until homogeneous.
- ↓ **Add** 1 part Test Portion to 20 parts Extraction Buffer 1X.
- ↓ **Extract** Incubate for 15 minutes @ 40°C shaking every 2 minutes.
- ↓ **Cool (optional)** Allow the extract to cool to room temperature.
- ↓ **Separate** Centrifuge for 10 minutes or settle.

4.2. ELISA Protocol

- ↓ **Pipette** **100µL** Standards, Sample Extracts into wells.
- ↓ **Mix. Incubate** at room temperature for **20 minutes**.
- ↓ **Wash wells** three times with Wash Solution.
- ↓ **Pipette** **100µL** HRP-Conjugate into wells.
- ↓ **Mix. Incubate** at room temperature for **20 minutes**.
- ↓ **Wash wells** three times with Wash Solution.
- ↓ **Pipette** **100µL** TMB Substrate reagent into wells.
- ↓ **Mix. Incubate** at room temperature in the dark for **20 minutes**.
- ↓ **Pipette** **100µL** Acid Stop Solution into wells.
- ↓ **Mix. Read** wells at **450nm** wavelength within 15 minutes.
- ↓ **Calculate** PPM Tropomyosin results for all Samples.



5. SAFETY/PROCEDURAL NOTES

5.1. SAFETY

- 5.1.1. Some of the kit contents contain a low concentration of the preservative thiomersal (thimerosal; merthiolate), however the kit is safe if used according to these instructions and Good Laboratory Practice (GLP) techniques.
- 5.1.2. Stop Solution contains a relatively weak concentration of sulphuric acid: wear safety glasses; use with care; avoid splashing.

5.2. PROCEDURAL

- 5.2.1. **Store kit at 2-8°C.** Wash Solution concentrate may form crystals/precipitates, *which must be re-dissolved e.g. by placing the bottle in warm water, prior to use.*
- 5.2.2. Users should maintain normal standards of good laboratory practice.
- 5.2.3. If not stated, tolerances required for the various measurements used are:
Temperature $\pm 1^{\circ}\text{C}$; Time ± 1 minute; Volumes & Weights $\pm 1\%$
- 5.2.4. Because of the extreme sensitivity of the test, very high standards of cleanliness should be observed when handling Laboratory Samples/Test Portions, using equipment and cleaning down before, between and after all stages in the process. The use of a swabbing kit (e.g. Imutest Swabbing kits Cat. No. A6008/A6009) can help validate laboratory/ equipment cleaning regimes.
- 5.2.5. Proteins bind strongly to some plastics e.g. polystyrene; it is recommended that polypropylene or glass are used for sample handling.
- 5.2.6. To prevent cross-contamination, pipette tips should not be reused.
- 5.2.7. "Reverse" pipetting is preferred for air displacement pipettes; rinse tip several times before pipetting out. Avoid drops of reagent on the outside of the tip entering wells by wiping carefully with a clean tissue.
- 5.2.8. The key to good results is consistency from sample to sample & well to well; work quickly but carefully to avoid assay drift; small (32/48 well) assays are preferred. Duplicate wells (at least some!) are strongly recommended.
- 5.2.9. If required for re-testing, Laboratory Sample extracts can be stored FROZEN at or below -18°C ; they remain stable for several weeks.



6. KIT MATERIALS PROVIDED

- 6.1. Note: Kit contents vary slightly depending on kit size i.e. 48- or 96-well presentations – see below.
- 6.2. **Extraction & Sample Dilution Buffer 10X Concentrate**
- 6.2.1. 2 x 30mL or 4 x 30mL provided; diluted (1X) Extraction & Sample Dilution buffer is used to extract and, if necessary, dilute the Laboratory Samples/Extracts.
- 6.3. **Anti-Tropomyosin antibody-Coated microwell Plates (6 or 12 x 8 well strips).**
- 6.3.1. Foil sealed in a re-sealable pouch with a harmless, self-indicating (yellow: active; green: not active – do not use plate) desiccant; a plate cover is also provided.
- 6.4. Pre-prepared **Tropomyosin Standards.**
- 6.4.1. 5 x 2.0mL or 5 x 3.0mL each of five ready to use Standards containing Zero, 20, 80, 200 & 400 PPB Tropomyosin.
- 6.4.2. NOTE: If additional “cut-off” Standards are required for e.g. Qualitative testing, use Extraction/Dilution Buffer as the Zero Standard and also use it to dilute one of the higher Standards to a suitable cut-off value.
- 6.5. **Washing Solution 10X Concentrate**
- 6.5.1. 1 x 30mL or 2 x 30mL to be used at 1X to wash the assay wells.
- 6.6. **Tropomyosin Antibody (HRP) Conjugate**
- 6.6.1. 1 x 7.5mL or 1 x 15mL of HRP Conjugate.
- 6.7. **TMB Substrate**
- 6.7.1. 1 x 7.5mL or 1 x 15mL; ready to use. CARE: Light Sensitive (turns blue!)
- 6.8. **Stop Solution** CAUTION: Dilute acid
- 6.8.1. 1 x 7.5mL or 1 x 15mL of dilute H₂SO₄
- 6.9. **Instructions For Use & Assay Layout Guide**



7. EQUIPMENT & MATERIALS

7.1. WHAT YOU MAY NEED (NOT INCLUDED IN THE KIT):

7.2. Sample mill, chopper or blender for Laboratory Sample preparation – requirement dependent on sample type – see Sample Preparation below.

7.3. Two place balance.

7.4. Centrifuge capable of achieving at least 1000g; 2000g – 5000g is preferable. The use of a centrifuge capable of directly spinning extraction tubes saves time and reduces the possibility of cross-contamination between extracts.

7.5. Purified water for reagent preparation.

7.6. Clean containers for making up and containing 1X Extraction/Dilution Buffer & Wash Solutions.

7.7. Polypropylene or glass containers for Test Portion extraction (~20-30mL) and centrifugation (if possible use extraction tube).

7.8. Microlitre pipettes and tips.

7.9. Wash bottle with fine spout and absorbent paper towel for microwell washing.

7.10. ELISA plate reader with 450nm wavelength filter.

7.11. **OPTIONAL MATERIALS/EQUIPMENT:**

7.12. The use of a repeating pipette capable of delivering multiples of 100µL volumes, plus dispensing syringes and tips, helps speed the addition of HRP, TMB Substrate & Stop reagents, thus minimising assay drift.

7.13. The use of an automated or hand-held ELISA plate washer system reduces the time taken to wash plates and can improve consistency.

7.14. ELISA software greatly reduces the time required to calculate results.



8. PREPARATION OF KIT REAGENTS

8.1. Allow kit contents to reach room temperature before preparing reagents; if a precipitate/crystals form in Wash Solution concentrate, warm slightly and mix well to re-dissolve before dilution.

8.2. Extraction & Sample Dilution Buffer: Dilute 1/10 (1:9) with purified water (e.g. add 15mL concentrate to 135mL water and mix well).

FOR SOLID SAMPLES: Add e.g. 0.5 g of HOMOGENEOUS sample to 10 ml of the prepared Extraction & Sample Dilution Buffer.

FOR LIQUID SAMPLES: Add e.g. 0.5 ml of HOMOGENEOUS sample to 9.5 ml of the prepared Extraction & Sample Dilution Buffer.

8.3. Prepare Wash Solution 1X by diluting Wash Solution 10X Concentrate 1/10 (1:9) with purified water (e.g. add 15mL concentrate to 135mL water and mix well).

8.4. Prepare Tropomyosin antibody Coated Plates by cutting carefully across the foil pouch above the resealing “zip” from one notch to the other.

8.4.1. Take out the number of strips required, place them in the white strip holding frame; place the cover on the strips until they are required for use.

8.4.2. Replace the remaining strips in the foil pouch with the desiccant; seal carefully ensuring that the zip is properly secured.

9. PREPARATION OF LABORATORY SAMPLES

9.1. Swabbing samples are assayed undiluted.

9.2. Finely divided flours/powders, fine breadcrumbs and smooth liquids require no preparation.

9.3. For non-homogeneous Samples, e.g. sausages and other meat products, take out several grams of a representative portion of the sample and prepare by milling, grinding, chopping, blending etc until it has a fine particle size and/or appears to be homogeneous.

9.4. Weigh out a Test Portion of 0.5g into 10.0ml of Extraction Buffer 1X in e.g. a polypropylene tube/universal container. Record the exact weight added – you do not have to add exactly 0.5g, but make sure you record the weight and correct back for the actual weight used when calculating results.

9.5. Place the sample into a pre heated water bath at **40 °C for 15 minutes** shaking every two minutes to maintain homogeneity.

9.6. Either pour a portion of the extract into a suitable centrifuge tube or, if possible, spin the whole tube at $\geq 2,000g$ for 10 minutes. Alternatively, allow to settle for at least 30 minutes or until a reasonably clear layer appears above the settled food.

9.7. If a fatty layer appears above the extraction solution it is best to remove it by careful aspiration with a vacuum line.

9.8. If further dilution is required for any extracted samples dilute with Extraction Buffer 1X, which can also be used as the Zero Standard if required.



10. EXAMPLE ASSAY LAYOUT

10.1. Suggested Assay Layouts (32 & 48 well assays).

	4 Strip/32 Well assay						6 Strip/48 Well Assay					
A	S0	U2	S0	U8	○	○	U1	U1	S0	U9	U9	S0
B	S1	U3	S1	U8	○	○	U2	U2	S1	U10	U10	S1
C	S2	U3	S2	U9	○	○	U3	U3	S2	U11	U11	S2
D	S3	U4	S3	U9	○	○	U4	U4	S3	U12	U12	S3
E	S4	U4	S4	U10	○	○	U5	U5	S4	U13	U13	S4
F	U1	U5	U6	U10	○	○	U6	U6	U17	U14	U14	U17
G	U1	U5	U7	U11	○	○	U7	U7	U18	U15	U15	U18
H	U2	U6	U7	U11	○	○	U8	U8	U19	U16	U16	U19
	1	2	3	4	5	6	7	8	9	10	11	12

Key to Layout:

S0 – S4

Crustacea

Standards

(Zero-400ppb)

U1 – U19

Sample Extracts



11. DETAILED ELISA PROCEDURE

- 11.1. Allow all kit reagents to reach room temperature (18-24°C preferable); prepare Test Portion extracts and all ELISA reagents as described above.
- 11.2. Ensure that the work area is well organised and tidy, all extracts are clearly labelled in the correct order (Layout Guide) for pipetting and that ELISA equipment is ready for use; remove caps from all Standards/extracts to speed up addition to the wells.
- 11.3. Mark microwell strips on upper or lower tab to keep them in the correct order should they become detached from frame.
- 11.4. Mix the ready to use STANDARDS, HRP, TMB and STOP reagents gently just before use.
- 11.5. Add 100µL of Standards and Sample Extracts to the appropriate wells using a microlitre pipette.
- 11.6. Mix the plate by sliding back and forth, gently but briskly, in short movements (1-2cm side to side) on a smooth surface.
- 11.7. Cover the plate and incubate at room temperature for **20 minutes**.
- 11.8. WASHING: Empty wells by flicking out contents into a sink; carefully fill each well in turn using a wash bottle containing 1x Wash Solution. Repeat emptying and filling cycle twice more. After the THREE wash cycles, flick out the plate several times to remove excess water; tap the wells upside down FIRMLY on absorbent paper until little or no liquid appears on the paper; while inverted, wipe base of wells to clean them.
Alternatively: Use a hand held/automatic plate washer to aspirate then fill wells THREE times with 1x Wash Solution; tap onto paper and clean base as described above.
- 11.9. Immediately add 100µl of Anti-Tropomyosin HRP Conjugate reagent using a microlitre or repeating pipette; mix as described in 11.6.
- 11.10. Cover the plate and incubate at room temperature for **20 minutes**.
- 11.11. Wash all wells THREE times with 1x Wash Solution as in 11.8.
- 11.12. Immediately add 100µl of TMB Substrate to all wells; mix as described in 11.6.
- 11.13. Cover plate; incubate at room temperature for **20 minutes, IN THE DARK** (e.g. in a drawer) or until sufficient colour develops (sections 15/16; p. 13/14).
- 11.14. Add 100µl of Stop Solution to all wells (blue to yellow colour change in wells).
 - 11.15. Mix plate as described in 11.6 to stop enzyme activity and evenly distribute colour. (Colour remains stable for up to 15 minutes)
- 11.16. Read plate at 450nm using the plate reader and record absorbance values.



12. CALCULATION OF RESULTS

12.1. Plot Standard Curve on normal or semi-log graph paper; draw a line/curve of best fit; read off unknown Sample concentrations (ppb tropomyosin); record results on Layout Guide. Alternatively use curve-fit software to produce the results.

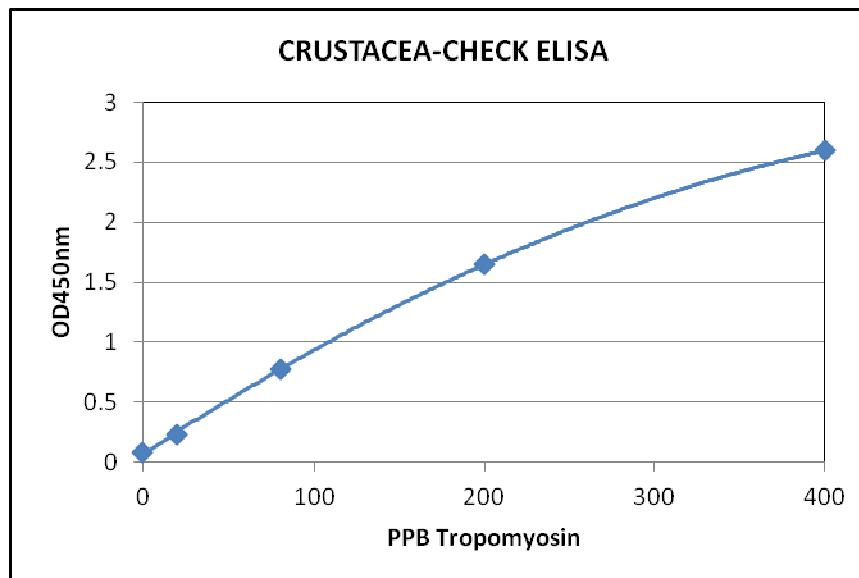
12.1.1. Plot OD_{450nm} values (Y-axis) against ppb tropomyosin (X-axis; 20-400ppb)

12.2. **IMPORTANT NOTE:** Remember to correct for the actual sample weights and dilutions used during the calculation process if exact weights/volumes were not used.

13. EXAMPLE ASSAY DATA

13.1. Zero Standard:	OD ₄₅₀	0.080
13.2. 20 µg/kg (ppb)	OD ₄₅₀	0.234
13.3. 80 µg/kg (ppb)	OD ₄₅₀	0.775
13.4. 200 µg/kg (ppb)	OD ₄₅₀	1.650
13.5. 400 µg/kg (ppb)	OD ₄₅₀	2.595

13.6. Example Crustacea-Check ELISA Standard Curve:




14. INTERPRETATION OF RESULTS

14.1. Assay Calibration. At present there is no agreed calibrator to help support crustacean allergen (Tropomyosin) analysis. The imutest Crustacea-Check ELISA has been calibrated using a panel of crustacea free/low crustacea spiked (incurred) food samples including:

14.1.1.	Savoury crackers	Recovery Rate:	89%.
14.1.2.	Soya sauce		81%
14.1.3.	Fish		92%
14.1.4.	Meat		95%

14.2. To convert ppb tropomyosin approximately to ppm crustacean tissue, on a dry weight basis, multiply by the following factors:

14.2.1.	Shrimp	Raw: 0.07	Cooked: 0.07
14.2.2.	Black tiger prawns	Raw: 0.06	Cooked: 0.26
14.2.3.	Lobster	Raw: 0.29	Cooked: 0.27
14.2.4.	Crab	Blanched: 0.23	Cooked: 0.52
14.2.5.	Crayfish	Raw: 0.05	Cooked: 0.49
14.2.6.	Note: Crustacean tissue contains ~14% protein (USDA Nutritional Tables).		

14.3. The antibody used in this kit did not react with:

Wheat flour	Pea	Oyster	Brazil nut
Cashew nut	Bean	Peanut	Barley
Almond	Rye	Pine nut	Coconut
Beef	Chicken	Oats	Egg
Soya	Macadamia nut	Milk (cow's)	Fish
Sunflower seeds	Walnut	Pumpkin seeds	Celery
Rice	Pistachio	Sesame	Pork
Chestnut	Hazelnut	Pecan	Corn
Buckwheat	Soya Lecithin	Potato	Carrot
Leek			



15. PERFORMANCE INDICATIONS

- 15.1. Prior to stopping the ELISA, S0 wells should be a colourless/very pale blue in colour and there should be a definite colour difference between the S0 and S1 (20 ppb) wells. The S4 (400 ppb) wells should be a mid-blue colour.
- 15.2. Indicative assay parameters are suggested to be as follows:
- | | |
|---|---------------------------------------|
| 15.2.1. Zero OD _{450nm} : | <0.15 units |
| 15.2.2. Limit of Detection: | <2.5 ppb (at 3 x Std. Dev. from Zero) |
| 15.2.3. Duplicate precision (OD _{450nm}): | Ideally <5% |
| 15.2.4. Duplicate precision (µg/kg; PPB): | Ideally <10 – 15% |

16. PROBLEM SOLVING

- 16.1. Regular maintenance and calibration of equipment helps improve assay performance.
- 16.2. Good laboratory practice reduces the possibility of cross contamination; swabbing kits (e.g. Imutest ESS swabbing kits Cat. Nos. A6008 & A6009) can help validate and verify laboratory/equipment cleaning regimes.
- 16.3. Poor replication is most often due to poorly maintained pipettes or inadequate/inconsistent plate washing.
- 16.4. Pipettes: ensure that all pipettes are kept in good condition and are regularly calibrated.
- 16.5. Try to avoid bubbles in the wells during the last wash by carefully overfilling, especially when using a wash bottle. If using a hand-held washer the bubbles can be aspirated away; if using a wash bottle, flick out well contents vigorously. After washing, tap **vigorously** on absorbent paper towel until no bubbles remain in the wells and little or no liquid appears on the paper towel.



- 16.6. Consistently attaining ideal levels of colour development (see example data section 13; page 11) depends on:
- 16.6.1. laboratory temperature; at temperatures below 18°C incubation times tend to be longer and above 22°C they may need to be shortened.
 - 16.6.2. effectiveness of washing; ensure that wells are filled to the rim and remember, it is difficult to over-wash!
 - 16.6.3. plate reader range; some readers can measure up to an absorbance as high as 3 units or more, whereas others are limited to <2 units. It is important to judge colour development to fit the range of your reader.
 - 16.6.4. previous experience of this ELISA in your lab.
 - 16.6.5. age of the kit (proximity to expiry date).
- 16.7. If you also have a 620nm filter you can monitor colour development after ~nine minutes to help predict final (stopped) OD450nm values. These will be ~3 times the predicted OD620nm level at ten minutes. Stop the assay when the OD620 value is expected to be between 0.5–0.8 units.
- 16.8. If your plate reader has a pre-mixing facility, set the speed to between 700-900 cycles per minute and time for ~20 seconds.



17. RECYCLING



Wherever possible, D.I.L. recycles its waste materials. Please help our environment by recycling the paper/card, plastic & glass used in this kit and during the extraction & dilution processes.

Remember the recycling mantra:

- ✓ Reduce
- ✓ Reuse (with care – avoid cross contamination!)
- ✓ Recycle



Diagnostic Innovations Limited ensures that its products are made from high quality raw materials but can make no warranty, express or implied, as to their suitability other than to measure crustacean content when used exactly in accordance with these instructions.

Use of the kit for any other purpose is outside its intended use.

Any damages, including consequential or special damage or expense arising directly or indirectly from using this product, are limited to the replacement value of the kit.

Other Imutest allergen/gluten detection related products are also available:

A range of **Allergen-Check & Gluten-Check ELISA kits** for:
peanut, almond, hazelnut, walnut, milk (caseins), milk (BLG/whey), mustard,
cereal/wheat gluten, egg, lupin, soya, crustacea, (white) fish & sesame

Allergen/Gluten Environmental & Surface **Swabbing Kits**

GLUTEN FlowThrough™ & GLUTEN SWABBING Tests

For gluten swabbing/testing in small laboratories or in food manufacturing plants
without laboratory facilities for e.g.

Raw material & finished product testing (detects 10-20PPM gluten)

Environmental swabs (detects <1ppm gluten in the swab solution)

Supplied by:

Diagnostic Innovations Limited

Spectrum House, Llys Edmund Prys, St. Asaph Business Park, LL17 0JA, U.K.

Tel: +44 (0)1745 535 943

Fax: +44 (0)1745 582 437

E-mail: food@imutest.com

Web: www.imutest.com/foodtesting